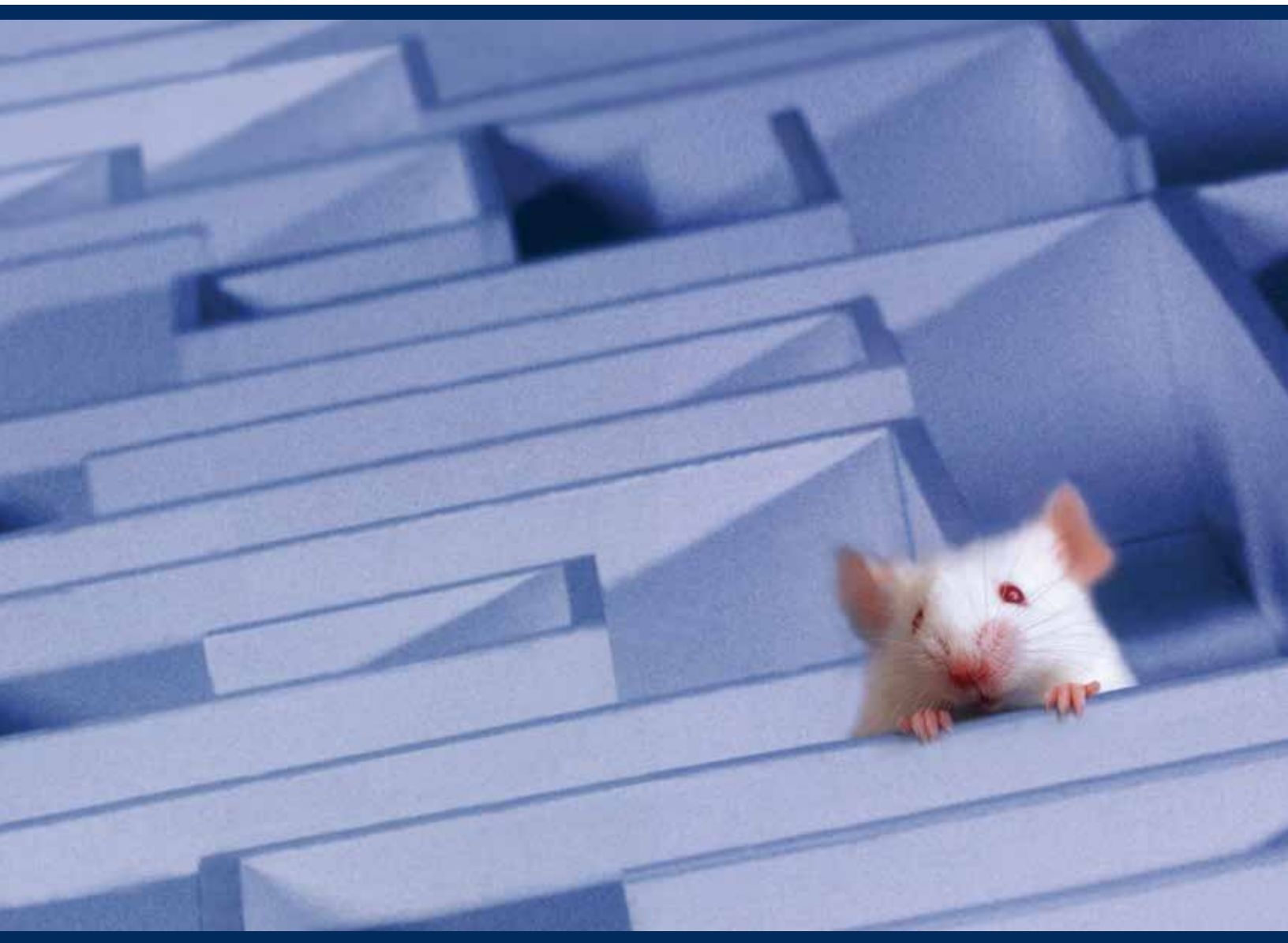


Specialty Cleaning Products for Animal Lab Facilities





Contec® Specialty Cleaning Products for Lab Animal Research Facilities

Mopping systems, wipes and disinfectants for all size facilities and all types of surfaces

For more than 25 years, Contec, Inc. has been a leading manufacturer of contamination control products for mission-critical cleaning in controlled environments worldwide. Contec's cleanroom wipes, mops and disinfectants are used in various industries around the globe – biomedical, pharmaceutical, healthcare, medical device, microelectronics, optics, semiconductor, data storage, automotive, aerospace and others. Combining that knowledge and experience with that of our industry specific distribution partners, we understand the unique cleaning requirements of lab animal research facilities.

We understand that the proper cleaning of lab animal research facilities is essential to animal well-being, the quality of research data, the health and safety of personnel, as well as serviceability of equipment and facilities.



Controlling the spread of contaminants and pathogens is of the utmost importance. Animal models may host a variety of viral, bacterial, parasitic and fungal agents. Frequently these organisms cause no overt signs of disease. However, the natural pathogens of these laboratory animals may alter host physiology, rendering the host unsuitable for experimental uses. These agents can have profound effects on research and can be harmful to staff if proper control is not maintained.

Having the right tool for the job is half the battle. Contec's mopping systems and wiping products are developed with the collaboration of some of the most respected laboratories in the world. The significant costs and dangers associated with repetitive stress injuries can be avoided by simply putting the right tools in your staff's hands.

Contec's disinfectants utilize chemistries that provide better results, in less time, with a greatly reduced impact on animals, people and equipment surfaces, and environment.

Our sales and technical support teams are fully trained to assist in the selection of the proper tools, and chemistries. We are also available to help develop procedures and methodologies to maintain your facility at the highest possible level. We understand budgets and other constraints are factors that must be considered, so please allow our sales and technical support teams to develop a customized plan to fit your needs.

PREempt™ Ready to Use Disinfectant Cleaner Solution and Wipes

PREempt™ Ready to Use Disinfectant Cleaner Solution and Wipes are designed for use in lab areas that require fast surface disinfection. A powerful disinfectant that utilizes the revolutionary and globally patented Accelerated Hydrogen Peroxide® (AHP®) technology, PREempt is effective against a broad-spectrum of bacteria and viruses* in only 1 minute! PREempt was designed to be easier on users and is essentially non-irritating to eyes and skin. The active ingredient, Hydrogen Peroxide, breaks down into water and oxygen, leaving no active residuals.

Fast – Ready to Use formula with 1 minute kill time for bacteria and viruses*, including *Feline calicivirus* and *Avian Influenza A*



EPA-Registered Claims**

- 30 Second Non Food Contact Broad-Spectrum Sanitizer giving a 3 Log (99.9%) reduction in Vegetative Bacteria**
- 1 minute Bactericidal Claim
- 1 minute *Virucidal Claim
- 5 minute Mycobactericidal Claim
- 10 minute Fungicidal Claim

** Please see technical data sheet or website for a complete list of organisms.

PREempt™ Concentrate Disinfectant Cleaner Solution

PREempt™ Concentrate is designed for use in lab areas that require environmental cleaning and disinfection, especially large animal housing areas. A powerful disinfectant that utilizes the revolutionary and globally patented Accelerated Hydrogen Peroxide® (AHP®) technology, PREempt™ Concentrate is effective against a broad-spectrum of bacteria, viruses* and fungi in 5 minutes. PREempt Concentrate at in-use solution is designed to be easier on users and is essentially non-irritating to eyes and skin. The active ingredient, Hydrogen Peroxide, breaks down into water and oxygen, leaving no active residuals. PREempt™ Concentrate features a **90 day shelf life** for dilution into a closed bucket, much longer than competitive products.

Fast – Effective at 1:16 dilution in 5 minutes against bacteria, fungi and viruses*, including **Canine parvovirus* and **Minute virus of mice*



EPA-Registered Claims**

- 30 Second Broad-Spectrum Sanitizer at 1:16 dilution
- 5 minute *Virucidal Claim at 1:16 dilution
- 5 minute Bactericidal Claim at 1:16 dilution
- 5 minute Fungicidal Claim at 1:16 dilution

** Please see technical data sheet or website for a complete list of organisms.

PREempt™ Ready to Use and PREempt™ Concentrate

FEATURES	BENEFITS
Cleaner	EPA registered, broad spectrum one step disinfectant with proven cleaning efficiency.
Responsible	Designed to be easier on employees and animals.
Sustainable	Hydrogen peroxide breaks down into water and oxygen, reducing environmental impact.

Part No.	Description	Packaging
21101	PREempt Ready to Use Liquid with flip top, 32 oz. (0.9L) bottle	12 bottles/case
ACCTRIGR	Non-aerosol trigger sprayer for 32 oz. bottle	12 each/case
21105	PREempt Ready to Use Liquid, 1 gallon (3.8L)	4 gallons/case
21109	PREempt Ready To Use Liquid, 5 gallon, (18.9L)	1 each/case
21221	PREempt Disinfectant Wipes Canister, 6" x 7" (15.2 x 17.8cm), 160 count	12 canisters/case
21305	PREempt Concentrate, 1 gallon (3.8L) container	4 gallons/case

These products are only available to customers in the United States.

PeridoxRTU® Sporidical Disinfectant & Cleaner

The Next Generation of Sporidical Disinfection

PeridoxRTU is an EPA-registered sporidical disinfectant cleaner that cleans, deodorizes, and disinfects in a one-step process. PeridoxRTU's 3 minute contact/kill claim is the fastest time for all EPA-registered liquid sporidical disinfectants for *C. difficile*. PeridoxRTU works better and faster than competitive products by utilizing a patented blend of diluted hydrogen peroxide and peracetic acid chemistry combined with a blend of surface-active agents that provide enhanced performance and product stability.

Superior Cleaning Performance Single-Step Process

PeridoxRTU's formulation includes small amounts of highly effective polymers and surfactants, which in combination with the hydrogen peroxide forms micro-bubbles when in contact with soils. This allows penetration and unsurpassed cleaning and removal performance compared to other EPA disinfectants.

Outstanding Material Compatibility with Minimal Residual and Environmental Impact

Despite its supreme antimicrobial killing power, PeridoxRTU is still mild enough for use on most surfaces. The minimal residue left behind is far less than bleach and other sodium hypochlorite solutions. The innocuous by-products of the clean and disinfect process are water, oxygen, and vinegar. The characteristic vinegar odor tells you the product is working and leaving your facility clean.

Blows the Competition Away with Minimal Environmental Impact

PeridoxRTU's revolutionary patented formula offers performance far beyond that offered by other disinfectants: bleach, sodium hypochlorite tablets, quaternary ammonium/alcohol blends, and other hydrogen peroxide and peracetic acid products.

Part No.	Description	Packaging
CR85335	PeridoxRTU Sporidical Disinfectant and Cleaner, Ready to Use, 32 oz. (0.9L)	6 bottles/case
CR85336	PeridoxRTU Sporidical Disinfectant and Cleaner, Ready to Use, 1 gallon, (3.8L)	4 bottles/case

Where to use:

- LAR equipment
- Gaging systems
- Lab instruments
- LCD screens
- Walls
- Floors

Residual Liquid Efficacy:

- Fungicidal in 1 minute
- Sporidical in 3 minutes
- Bactericidal in 2 minutes
- Virucidal in 2 minutes
- Tuberculocidal in 5 minutes

Please see website or label for complete efficacy data.

FEATURES

- 2 year shelf life.
- 3 minute Sporidical activity!
- Non-bleach formula.
- No mixing of hazardous chemicals.
- No IPA, ethanol.



MicroGenesis™ Wipes

Revolutionary Microfiber Wipe

MicroGenesis utilizes 100% polyester microfiber that is a lightweight construction that maximizes the amount of microfiber available to pick-up and retain dander, hair, and bedding materials. The construction is tough and durable and has been designed with cost in mind. It can be used as a disposable or limited use product in applications where laundering poses additional risks of contamination.

Part No.	Description	Packaging
LWMM0100	MicroGenesis microfiber wipes, laundered, 12" x 10" (31 x 25cm)	100 wipes/bag; 8 bags/case



Dry Wipes

Contec offers several dry wipes designed for durability and ease of use in many cleaning applications. Choose from a variety of economical, absorbent non-wovens for spill control or routine cleaning and wiping tasks. Visit our website for clean-processed polyester knit options.

Part No.	Description	Packaging
TSWC0917	TuffStuff premium creped nonwoven, wipes white, 9" x 16.5" (23 x 42cm), pop-up dispenser box	100 wipes/box; 8 boxes/case
TSWL1213	TuffStuff light nonwoven wipes, white, 12" x 13" (31 x 33cm), quarterfolded	50 wipes/bag; 18 bags/case



PROSAT® Presaturated Wipes

Contec is the leader in the manufacturing of presaturated wipes for critical environments. Presaturated wipes offer a convenient and controlled solution to wet wiping applications. Currently available with IPA/DI water blends.

- Fast, efficient cleaning.
- Disposable wipes reduces potential for cross-contamination.

Part No.	Description	Packaging
PS-850	PROSAT polypropylene wipes, 70% IPA/30% DI Water, 8" x 8" (20 x 20cm)	50 wipes/bag; 5 bags/case



Textured Edgeless® Mopping System

The Textured Edgeless knitted polyester tube mop eliminates contamination from breakage and deterioration of traditional string mops. For use with aqueous solutions containing cleaning agents and disinfectants. Available with colored tail bands for differentiation and prevention of cross contamination between rooms. Works well in existing wet mop hardware; however, we recommend a down press wringer for maximum extraction.

- Textured polyester eliminates cotton mop fibers in the facility, as well as cellulose that can be a food source for mold and bacteria.
- Rugged knitted construction lasts up to 5 times longer than traditional mops.
- Withstands many trips through the cage wash. Fast drying.
- Colored tail bands for differentiation and prevention of cross contamination between rooms.

Part No.	Description	Packaging
ELMOP5	Textured Edgeless mop head with aggressive cleaning headband	1 mop/bag; 30 mops/case
EL-MOPT-GY	Textured Edgeless mop head, gray	1 mop/bag; 10 mops/case
EL5-BLU	Textured Edgeless mop head, blue tail band	1 mop/bag; 12 mops/case
EL5-BLK	Textured Edgeless mop head, black tail band	1 mop/bag; 12 mops/case
EL5-GRN	Textured Edgeless mop head, green tail band	1 mop/bag; 12 mops/case
EL5-RED	Textured Edgeless mop head, red tail band	1 mop/bag; 12 mops/case
2640	60" (152cm) Stainless Steel Handle & frame, 1 piece	1 each/case
A71612	64" (162.5cm) Fiberglass Handle and frame, 1 piece, non-autoclavable	12 each/case
2646	Dynamate QuickConnect lightweight mop head frame, 6" x 7" (15 x 18cm)	1 each/case
2725E	QuickConnect Handle, 60" (150cm), stainless steel, lightweight	1 each/case

For a full listing of QuickConnect handles, go to page 10.



Tail Band Colors



Scrub Max™ Mop

Heavy-duty abrasive mop

The Contec Scrub Max Mop is a thick abrasive mop that is ideal for breaking up tough contamination in heavily soiled areas. Designed for concrete and unpainted surfaces, this lightweight mop reduces stress and work related injuries on maintenance staff, provides a full range of motion and is ideal for reaching awkward areas. The low-profile design is ideal for accessing soiled areas under equipment and cages.

- Aggressive texture of the mop breaks up gross contamination.
- Perfect for large animal rooms, rabbit rooms and primate facilities.

Part No.	Description	Packaging
TSSM0100	Scrub Max pad, 12" x 5" (30 x 13cm)	12 pads/case
2683	Mop Head Frame, 12" x 3.75" (30 x 10cm)	1 each/case
2725E	QuickConnect Handle, 60" (150cm), stainless steel, lightweight	1 each/case

For a full listing of QuickConnect handles, go to page 10.

VertiKlean® MAX™ Mopping System

Polyester and foam mop head

The VertiKlean Max Mopping System is designed for cleaning and applying disinfectants to walls, ceilings and floors. The absorbent sponge is laminated to filament microfiber polyester knit fabric, and smoothly glides over floors and textured surfaces, providing excellent contamination removal.

- Enables uniform application of disinfectants.
- Light weight mop reduces stress on maintenance staff.
- Extension handles allow cleaning up to 15'.
- Lasts longer than traditional sponge mops.

Part No.	Description	Packaging
VKMX0225	Medium VertiKlean Max mop head, 13 x 4 x 1" (32 x 11 x 2cm)	4 mops/bag; 7 bags/case
2652A	QuickConnect mop head frame, 11.5" (29cm)	1 each/case
2725E	QuickConnect handle, 60" (150cm), stainless steel, lightweight	1 each/case
2645	QuickConnect handle, 50" (127cm) extends to 92" (234cm) stainless steel	1 each/case

QuickConnect Handles 2642 and 2643 are also recommended. For a full listing of QuickConnect handles, go to page 10.



Clean Scrub™ Mop

Textured polyester mesh mop head

Contec's Clean Scrub disposable foam mop head is wrapped with a textured polyester mesh to quickly remove dirt and grime from heavily contaminated surfaces. The mop head provides exceptional liquid absorption and resists tearing. The Clean Scrub mop will not scratch surfaces and is compatible with most disinfectants and solutions. Use with our QuickConnect mop head frames and handles.

- Textured polyester mesh removes heavily soiled contamination from surfaces without scratching.
- Single use mop head eliminates cross contamination.
- Slim profile fits into small spaces.
- Compatible with a wide range of disinfectants.

Part No.	Description	Packaging
VKSC0003	Clean Scrub Mop Head 13" x 4" x 1" (32 x 11 x 2cm)	4 mops/bag; 7 bags/case
2652A	QuickConnect mop head frame, 11.5" (29cm)	1 each/case
2725E	QuickConnect handle, 60" (150cm), stainless steel, lightweight	1 each/case
2686	QuickConnect handle, 16" (41cm), stainless steel, lightweight, hanging loop	1 each/case

For a full listing of QuickConnect handles, go to page 10.





EasyCurve™ Mopping System

The convenience of a self-wringing mop combined with ergonomic design eliminates stress and pain

The EasyCurve mop consists of a flat, fabric-laminated mop head attached to a curved, stainless steel frame. The disposable mop head attaches securely to the curved frame by a unique system of latching tabs that are simple and easy to remove.

- Up to 50% lighter than self-wringing roller mops.
- Ultimate maneuverability allows maximum cleaning speed.
- Recommended for tacky contamination control flooring.
- Curved mop head offers true “lift-and-pull” surface cleaning.
- Enables all surface cleaning with a single mopping tool.

Part No.	Description	Packaging
EZMP0300	EasyCurve mop head with microfiber, 14" x 4.25" x 0.75" (35.5 x 11 x 2cm)	4 mops/bag; 12 bags/case
2724	EasyCurve mop head frame <i>U.S. Design Patent No. 586,966</i>	1 each/case
2725E	QuickConnect handle, 60" (150cm), stainless steel, lightweight	1 each/case

For a full listing of QuickConnect handles, go to page 10.

Tax-Fre® Dry Mopping System

The Tax-Fre dry mop removes dust, hair and dirt from floors prior to or between wet mop applications. Disposable fabric floor mop covers are specially treated to pick up fine contaminants like bedding material, hair and pinworm eggs. The large 23" x 5" (58 x 13cm) tapered swivel head with lightweight stainless steel handle enables the operator to quickly clean in hard to reach areas.

- Use to capture small particles and fibers, such as powder, dander, dust, lint and hair.
- Tax-Fre is designed for dry use; not to be used with liquids of any kind.

Part No.	Description	Packaging
TF-1228	Tax-Fre floor mop covers, 12" x 28" (30.5 x 71cm)	50 covers/bag; 4 bags/case
UF211	Tax-Fre swivel mop head, 23" x 5" (58 x 13cm)	1 each/case
2725E	QuickConnect stainless steel handle, 60" (152.4cm)	1 each/case





EasySat™ Bucketless Floor Mop

The EasySat Bucketless Mop allows application of cleaning and disinfecting solutions directly to the floor without a bucket. The gravity fed reservoir holds 52 oz. of solution and covers approximately 5,000 square feet. Requires minimal storage space. Fully autoclavable.

- Tightfitting lid minimizes exposure to chemicals.
- Trigger flow control mechanism releases cleaning solution on demand or continuously.
- Angled mop head cleans hard-to-reach areas and is available in two styles: smooth surface for standard floor cleaning, and textured surface for more abrasive action.
- For floor use only.

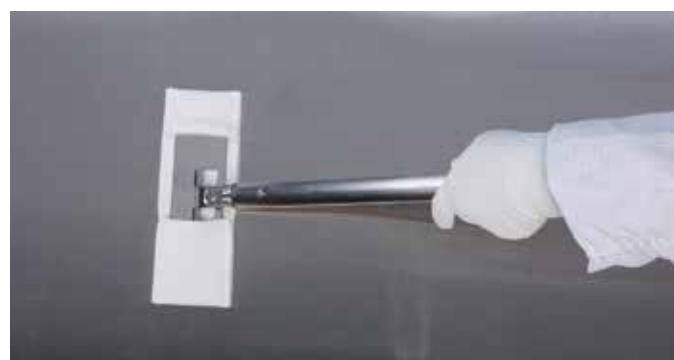
Part No.	Description	Packaging
BLMOP	EasySat Bucketless Floor Mop hardware	1 each/case
BLVKMOP	EasySat mop head, 21.5" x 18.25" x 4.75" (55 x 47 x 12cm)	4 mops/bag; 8 bags/case
TBLVKMOP	EasySat mop head, textured, 21.5" x 18.25" x 4.75" (55 x 47 x 12cm)	4 mops/bag; 8 bags/case

EasyReach™ Cleaning Tool

For biosafety hoods and isolators

Made from lightweight stainless steel, the EasyReach cleaning tool is ideal for cleaning lab hoods, isolators, incubators, and other confined spaces. The low-profile, 360° pivoting head ensures even the most awkward areas can be quickly reached with minimum effort.

- Use with disposable, absorbent quilted polyester EasyReach Cleaning Pads, created with easy installation and removal in mind.
- Well-fitted EasyReach pad ensures effective, even surface coverage reducing the number of viable and non-viable contaminants and ensuring maximum residue removal.



Part No.	Description	Packaging
MEQT0001	EasyReach Cleaning Pads, quilted polyester	4 pads/bag; 15 bags/case
2665SF	EasyReach Cleaning Tool, 16.5" (42cm), lightweight stainless steel, 1 piece	1 each/case
2685	QuickConnect EasyReach mop head frame, 7.5" (19cm), stainless steel	1 each/case
2686	QuickConnect handle, 16" (40.6cm), stainless steel, lightweight, hanging loop	1 each/case

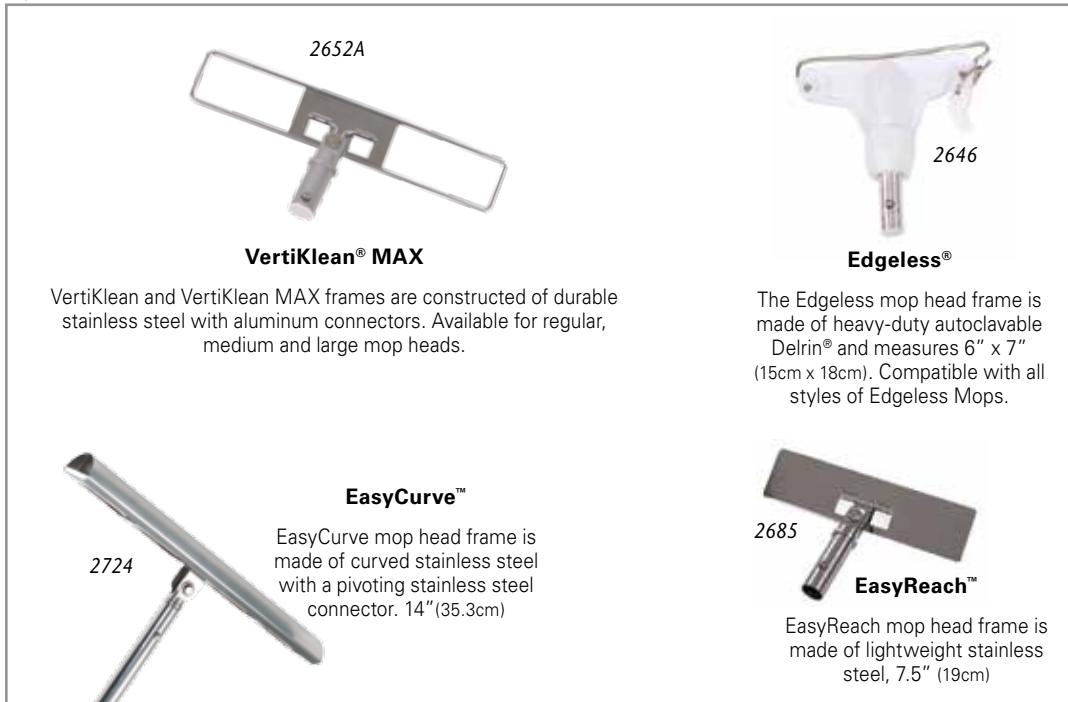


QuickConnect™ Mop Hardware

Interchangeable Handles and Frames for Contec® Mopping Systems

QuickConnect handles offer maximum flexibility for cleaning in critical environments. Telescoping and fixed length handles are available in lightweight anodized aluminum and durable stainless steel. All QuickConnect handles are autoclavable.

QUICKCONNECT MOP HEAD FRAMES:



QuickConnect™ Handles:

Telescoping and fixed-length handles are available in lightweight anodized aluminum, durable electropolished stainless steel and fiberglass. Autoclavable.

Aluminum Handles

- 16" (41cm) handle extends to 30" (76cm)
- 50" (127cm) handle extends to 92" (234cm)

Stainless Steel Handles

- Telescoping:**
 - 16" (41cm) handle extends to 30" (76cm)
 - 50" (127cm) handle extends to 92" (234cm)
- Fixed Length:**
 - 16" (41cm) handle
 - 60" (150cm) handle

Fiberglass Handles

- 71" (180cm) handle extends to 130" (330cm)

Part No.	Description	Packaging
2652A	QuickConnect Mop Head Frame, 11.5" (29cm), for Medium VertiKlean; Medium and Large VertiKlean Max	1 each/case
2646	Dynamate QuickConnect lightweight mop head frame, 6" x 7" (15x18cm), for Edgeless mops	1 each/case
2724	QuickConnect EasyCurve pivoting mop head frame, stainless steel	1 each/case
2685	QuickConnect EasyReach mop head frame, stainless steel, 7.5" (19cm)	1 each/case
2642	QuickConnect handle, 16" (41cm) extends to 30" (76cm), anodized aluminum	1 each/case
2643	QuickConnect handle, 50" (127cm) extends to 92" (234cm), anodized aluminum	1 each/case
2645	QuickConnect handle, 50" (127cm) extends to 92" (234cm), stainless steel	1 each/case
2746	QuickConnect handle, 71" (180cm), extends to 130" (330cm), fiberglass	1 each/case
2686	QuickConnect handle, 16" (41cm), stainless steel, lightweight, hanging loop	1 each/case
2725E	QuickConnect handle, 60" (150cm), stainless steel, lightweight	1 each/case



Visit www.contecinc.com
to view our Mopping How-to Videos

Contec® Mop Buckets, Carts, Wringers

Contec offers numerous stainless steel and plastic buckets, carts and wringers. To choose the best hardware option for your mopping requirements, please contact your Contec Representative or visit www.contecinc.com.

- All systems are fully autoclavable unless noted.
- Larger stainless steel carts have removable handles for easy storage and autoclaving.

Part No.	Description	Packaging
2743	Twin divided bucket with Slinger and frame, 5 gal (20L), green; includes one cover, 4 casters	1 each/case
2720	Polypropylene double bucket system, two 6.5 gal (25L) buckets (red, blue), wringer, cart with casters	1 each/case
2770-KIT	Polypropylene double bucket system, two 5 gal (20L) buckets (gray, red), cart with heavy duty casters	1 each/case
2757	Stainless steel cart with two 5 gal (20L) polypropylene buckets (red, gray), connecting kit, casters; <i>wringer must be purchased separately. See below.</i>	1 each/case
2759	Slinger and stainless steel frame, for 5 gal (20L) buckets	1 each/case
2765	Stainless steel bucket wringer frame for 5 gal (20L) buckets, use with 2767 or 2768	1 each/case
2767	Stainless steel bucket wringer, flat, for Contec flat mops, requires 2765 frame (not pictured)	1 each/case
2768	Stainless steel bucket wringer, curved, for EasyCurve mops, requires 2765 frame	1 each/case
2650	Plastic double bucket system, two 6.5 gal (25L) polypropylene buckets (red, blue), cart w/casters; <i>wringer must be purchased separately. See below.</i>	1 each/case
2750	Slinger and stainless steel frame, for 6.5 gal (25L) buckets, (for EasyCurve mops)	1 each/case
2756	Stainless steel flat mop wringer, fits 2650 and 2757 (for VertiKlean MAX mops)	1 each/case
2710	Stainless steel downpress wringer, fits 2650 and 2757 (for Edgeless mops)	1 each/case





Contec® cleaning and disinfecting products are available throughout the world. Sales representatives are conveniently located across Europe, Asia and North and South America. Please visit www.contecinc.com to find a sales representative in your area and to learn more about our products for critical environments.

Presaturated Wipes
Mopping Systems
Disinfectants

Spill Control Products
Knitted Wipes
Sterile Products

Sponges
Nonwoven Wipes
Swabs

NORTH AMERICA

Contec, Inc.

525 Locust Grove
Spartanburg, SC 29303 USA

Tel: +1 (864) 503-8333
Fax: +1 (864) 503-8444
Toll Free US, Canada, PR: 1-800-289-5762

EUROPE

Contec Europe

ZI du Prat - RP 3707
56037 VANNES Cedex
FRANCE

Tel: +33(0) 2 97 43 76 90

CHINA

**Contec Cleanroom
Technology (Suzhou) Co. Ltd.**

17 Longyun Road
Suzhou Industrial park
Suzhou 215026
China

Tel: +86-512-6274 4050
Fax: +86-512-6274 4051

www.contecinc.com



*Contec is an ISO registered company.
Please visit our web site to view our most
current certification.*